

# JASH Schütte

VALVES FOR BULK SOLIDS & LIQUID - SOLID MIXES

## PRODUCTS AT A GLANCE



KNIFE GATE VALVE - ZFI



KNIFE GATE VALVE - MONO



SLIDE GATE VALVE - ZFB



SWING GATE VALVE - KU



SLIDE GATE VALVE - VEG



DOUBLE FLAP VALVE - DFG

## Environmental Friendly Valve Solutions

- Water & Waste Water
- Sea Water
- Power
- Cement
- Steel
- Paper & Pulp
- Chemical
- Petrochemical
- Food Processing
- Pharmaceuticals
- Biogas
- Agriculture



## ENGINEERING EXCELLENCE AND EXPERIENCE

Since 1964, Schütte group Germany has been a pioneer in developing technologies for environmental friendly shut-off of critical bulk solid and liquid-solid mixes. Jash started offering these technologies in collaboration with Schütte from 1996. Together Jash-Schütte now brings the combined experience of around 80 years in meeting varied application of the industry in Europe, USA and Asia. Development of application specific products using German engineering excellence has enabled Jash-Schütte to offer the most innovative valve range in the industry – a range that has ensured complete dominance for many critical applications related to shut-off and metering within the industry. We have one of the best in-house manufacturing infrastructures in the industry which enable us to largely make these valves within our various manufacturing facilities. Our three facilities put together have over 380,000 Sq. feet area under cranes, where our team of over 250 engineers and 500 workers can turn out valve from 50 mm (2”) to 4000 mm (160”).



Unit 1, Indore with built up area spanning over 125,000 Sq. feet



Unit 2, Indore with built up area spanning over 155,000 Sq. feet



Unit 3 and 4, SEZ, Pithampur with built up area spanning over 100,000 Sq. feet



### KNIFE GATE VALVE ■ MODEL: ZFI ■ SERIES: C-201, C-211

Application	: These unidirectional valves are most suitable for pressure tight shut-off for water, sea water, mild slurry, liquid-solid mixes and dry bulk solid applications.
Available sizes	: DN 50 (2") to DN 1200 (48")
Pressure rating	: PN3 (45 PSI), PN6 (90 PSI) and PN10 (150 PSI) depending upon housing material, primarily for liquid applications
Temperature suitability	: -20°C to 250°C
Seating	: Resilient seat with metallic band
Bonnet	: Bolt on type (Optional)
Flange drilling standard	: ASME B16.5 / ASME B16.47 #150 / BS-EN 1092 PN 10 / PN 16
Modes of operation	: Manual, chain wheel, pneumatic, electric actuator and Hydraulic



### KNIFE GATE VALVE ■ MODEL: ZFI ■ SERIES: C-202, C-212

Application	: These unidirectional valves are most suitable for material tight shut-off for mild slurry, liquid-solid mixes and dry bulk solid applications.
Available sizes	: DN 50 (2") to DN 1200 (48")
Pressure rating	: PN3 (45 PSI), PN6 (90 PSI) and PN10 (150 PSI) depending upon housing material, primarily for liquid applications
Temperature suitability	: -20°C to 1100°C
Seating	: Integral metal seated
Bonnet	: Bolt on type (Optional)
Flange drilling standard	: ASME B16.5 / ASME B16.47 #150 / BS-EN 1092 PN 10 / PN 16
Modes of operation	: Manual, chain wheel, pneumatic, electric actuator & Hydraulic



### KNIFE GATE VALVE ■ MODEL: ZFI ■ SERIES: C-203, C-213

Application	: These unidirectional valves are most suitable for pressure tight shut-off for water, sea water, mild slurry and liquid-solid mixes
Available sizes	: DN 1400 (56") to DN 2400 (96"), higher sizes on request
Pressure rating	: PN3 (45 PSI), PN6 (90 PSI) and PN10 (150 PSI) depending upon housing material
Temperature suitability	: -20°C to 250°C
Seating	: Resilient seat with replaceable metal ring
Bonnet	: Bolt on type (Optional)
Flange drilling standard	: ASME B16.5 / ASME B16.47 #150 / BS-EN 1092 PN 10 / PN 16
Modes of operation	: Manual / chain wheel through gear, electric actuator & Hydraulic





**KNIFE GATE VALVE ■ MODEL: ZFI ■ SERIES: C-204, C-214**



- Application : These unidirectional valves are most suitable for material tight shut-off for mild slurry, liquid-solid mixes and for dry abrasive media.
- Available sizes : DN 1400 (56") to DN 2400 (96"), higher sizes on request
- Pressure rating : PN3 (45 PSI), PN6 (90 PSI) and PN10 (150 PSI) depending upon housing material, primarily for liquid applications
- Temperature suitability : -20°C to 950°C
- Seating : Metal seat with replaceable metal ring
- Bonnet : Bolt on type (Optional)
- Flange drilling standard : ASME B16.5 / ASME B16.47#150 / BS-EN 1092 PN 10 / PN 16
- Modes of operation : Manual/chain wheel through gear, electric actuator and Hydraulic

**KNIFE GATE VALVE ■ MODEL: ZFI ■ SERIES: C-205, C-215**



- Application : These bidirectional valves are most suitable for pressure tight shut-off for water, sea water, mild slurry and liquid-solid mixes.
- Available sizes : DN 50 (2") to DN 2400 (96"), higher sizes on request
- Pressure rating : PN3 (45 PSI), PN6 (90 PSI) and PN10 (150 PSI) depending upon housing material
- Temperature suitability : -20°C to 250°C
- Seating : Resilient seat with replaceable metal ring
- Bonnet : Bolt on type (Optional)
- Flange drilling standard : ASME B16.5 / ASME B16.47#150 / BS-EN 1092 PN 10 / PN 16
- Modes of operation : Manual, chain wheel, pneumatic, electric actuator and Hydraulic

**KNIFE GATE VALVE ■ MODEL: MONO ■ SERIES: C-102 & C-112**



- Application : These are bonneted unidirectional valves suitable for pressure tight shut-off for water, sea water and liquid-solid mixes. These are partially bidirectional and are glandless thereby offering low operating torque as compared to conventional knife gate valves.
- Available sizes : DN 50 (2") to DN 1200 (48")
- Pressure rating : PN3 (45 PSI), PN6 (90 PSI) and PN10 (150 PSI) depending upon housing material
- Temperature suitability : -20°C to 250°C
- Seating : Resilient seat with replaceable metal ring
- Bonnet : Provided
- Flange drilling standard : ASME B16.5 / ASME B16.47#150 / BS-EN 1092 PN 10 / PN 16
- Modes of operation : Manual, chain wheel, pneumatic, electric actuator & Hydraulic



### SLIDE GATE VALVE ■ MODEL: ZFB ■ SERIES: C-601, C-611

Application	: These unidirectional valves are suitable for pressure tight shut-off upto 3 Bar (45 PSI) for powder and granular materials. Its unique design ensures minimal material retention in valve, ability to achieve shut-off in standing columns and are leak tight to environment.
Available sizes	: DN 100 (4") to DN 600 (24")
Pressure rating	: PN3 (45 PSI)
Temperature suitability	: -20°C to 250°C
Seating	: Resilient seat with replaceable metal ring
Dust enclosure	: Provided
Flange drilling standard	: ASME B16.5 / ASME B16.47#150 / BS-EN 1092 PN 10
Modes of operation	: Manual, chain wheel, pneumatic, electric actuator & Hydraulic



### SLIDE GATE VALVE ■ MODEL: ZFB ■ SERIES: C-602, C-612

Application	: These unidirectional valves are suitable for pressure tight shut-off upto 5 Bar (70 PSI) for powder and granular materials from flow side only. Its unique design ensures minimal material retention in valve, ability to achieve shut-off in standing columns and leak tight to environment.
Available sizes	: DN 100 (4") to DN 600 (24")
Pressure rating	: PN5 (70 PSI)
Temperature suitability	: -20°C to 250°C
Seating	: Inflatable seal with replaceable metal ring
Dust enclosure	: Provided
Flange drilling standard	: ASME B16.5/ASME B16.47#150 / BS-EN 1092 PN 10
Modes of operation	: Pneumatic



### SWING GATE VALVE ■ MODEL: KU-STD ■ SERIES: C-301, C-311

Application	: These unidirectional valves are suitable for pressure tight shut off upto 3 Bar (45 PSI) for powders and granular materials. Its unique design offers fast shut-off (less than 3 Secs, even manually) and allow shut-off in standing columns and are leak tight to environment.
Available sizes	: DN 100 (4") – DN 400 (16")
Pressure rating	: PN3 (45 PSI)
Temperature suitability	: -20°C to 250°C
Seating	: Resilient seated with viper seal
Flange drilling standard	: ASME B16.5 / ASME B16.47#150 / BS-EN 1092 PN 10
Modes of operation	: Manual, pneumatic





**SWING GATE VALVE ■ MODEL: KU-HT ■ SERIES: C-312**



- Application : These are high temperature unidirectional valves suitable for bed ash drain application in coal fired boilers. These valves are made up of special grade stainless steel to suit higher temperature. Its unique design offers fast shut-off (less than 1 sec.) and allow shut-off in standing columns and are leak tight to environment.
- Available sizes : DN 100 (4") – DN 400 (16")
- Pressure rating : PN3 (45 PSI)
- Temperature suitability : 800°C to 1100°C
- Seating : Integral/replaceable metal seat
- Flange drilling standard : ASME B16.5 /ASME B16.47#150/BS-EN 1092 PN 10
- Modes of operation : Manual,pneumatic

**SWING GATE VALVE ■ MODEL: KU-HP+PAM ■ SERIES: C-303, C-313**



- Application : These bidirectional valves are designed for pressure and vacuum tight shut-off upto 5 Bar (70 PSI) in pneumatic conveying of bulk solid materials. These valves are leak tight to environment and are ideal as main inlet valve of pressure vessel in dense phase conveying and can also be used as replacement of dome valves.
- Available sizes : DN 100 (4") – DN 400 (16")
- Pressure rating : PN5 (70 PSI)
- Temperature suitability : -20°C to 250°C
- Seating : Resilient seated with inflatable seal. Replaceable metal ring (Optional)
- Flange drilling standard : ASME B16.5 /ASME B16.47#150/BS-EN 1092 PN 10
- Modes of operation : Pneumatic

**FABRICATED SLIDE GATE VALVE ■ MODEL: VEG ■ SERIES: C-531, C-541**

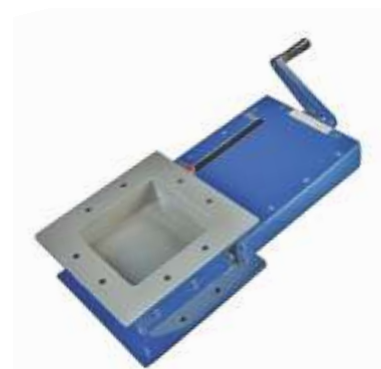


- Application : The VEG series valves are fabricated valves and are custom built to suit the size & application requirement of customer.
- Available sizes : From Sq. 100 (4") – Sq. 4000 (160") mm or as required by customer.
- Temperature suitability : -20°C to 950°C
- Seating : Integral metal seat, resilient seat and inflatable seat is offered as optional
- Flange drilling : As per Jash-Schütte
- Modes of operation : Manual, chain wheel, pneumatic, geared motor, electric actuator and hydraulic



### SLIDE GATE VALVE ■ MODEL: ZFS ■ SERIES: C-701

Application	: These are square port cast valves for material tight shut-off of free-flowing bulk solid materials. These valves are ideal for isolation of double flap valves & airlock for maintenance.
Available sizes	: Sq.100 (4") – Sq.500 (20")
Pressure rating	: PN3 (45 PSI)
Temperature suitability	: -20°C to 800°C
Seating	: Metal seated
Dust enclosure	: Provided
Flange drilling standard	: As per Jash Schütte
Modes of operation	: Manual, chain wheel, pneumatic, electric actuator and Hydraulic



### DOUBLE FLAP VALVE ■ MODEL: DFG ■ SERIES: C-401

Application	: These valves are ideal for air lock, batching or metering applications in free-flowing and abrasive bulk materials. These are especially designed to prevent bridging of material in the valve and enable in-situ replacement of seat and flapper. These valves are offered in short height for space tight installations.
Available sizes	: Sq. 200 (8") – Sq.400 (16")
Flow rate	: 1.0 – 4.5 m <sup>3</sup> /hr.
Pressure rating	: PN3 (45 PSI)
Temperature suitability	: -20°C to 800°C
Seating	: Metal seated with replaceable cone and flapper
Flange drilling standard	: As per Jash-Schütte
Modes of operation	: Counter weight, pneumatic, geared motor



### DOUBLE FLAP VALVE ■ MODEL: DFG ■ SERIES: C-402

Application	: These valves are ideal for air lock, batching or metering applications in free-flowing and abrasive bulk materials. These are especially designed to prevent bridging of material in the valve and enable in-situ replacement of seat and flapper. These are provided with increased height to handle higher flow rate.
Available sizes	: Sq. 200 (8") – Sq. 300 (12")
Flow rate	: 2.50 – 8.0 m <sup>3</sup> /hr.
Pressure rating	: PN3 (45 PSI)
Temperature suitability	: -20°C to 800°C
Seating	: Metal seated with replaceable cone and flapper
Flange drilling standard	: As per Jash Schütte
Modes of operation	: Counter weight, pneumatic, geared motor



- Manufacturer reserves the right to depart from the catalogue specifications and illustrations at any time, with or without notice.
- Pictures shown are general, unless specific job names are listed.



The entire range of Jash-Schütte valves can be offered in varied material of construction viz cast iron / cast carbon steel / cast ductile iron / cast stainless steel / duplex / super duplex and any special alloy to suit the application.

For more information about our products or to contact our sales representative, visit our website [www.jashindia.com](http://www.jashindia.com) or call at our office.



**SERIES C-215, BIDIRECTIONAL KNIFE GATE VALVE**  
SIZE DN 2000 (80")



**SERIES C-531, FABRICATED SLIDE GATE VALVE**  
SIZE DN 2500 X 1050 (100" x 42")



**JASH ENGINEERING LTD.**

31, Sector 'C', Industrial Area, Sanwer Road,  
Indore-452 015. (M.P.), INDIA  
Ph.: +91-731-6732700, 2720143, 2721143.  
E-mail: [info@jashindia.com](mailto:info@jashindia.com)  
Website: [www.jashindia.com](http://www.jashindia.com)

**SUBSIDIARIES:**

- Jash USA Inc., USA
- Rodney Hunt Inc., USA
- Mahr Maschinenbau GmbH, Austria
- Engineering & Manufacturing Jash Ltd., Hongkong
- Shivpad Engineers Pvt Ltd., India