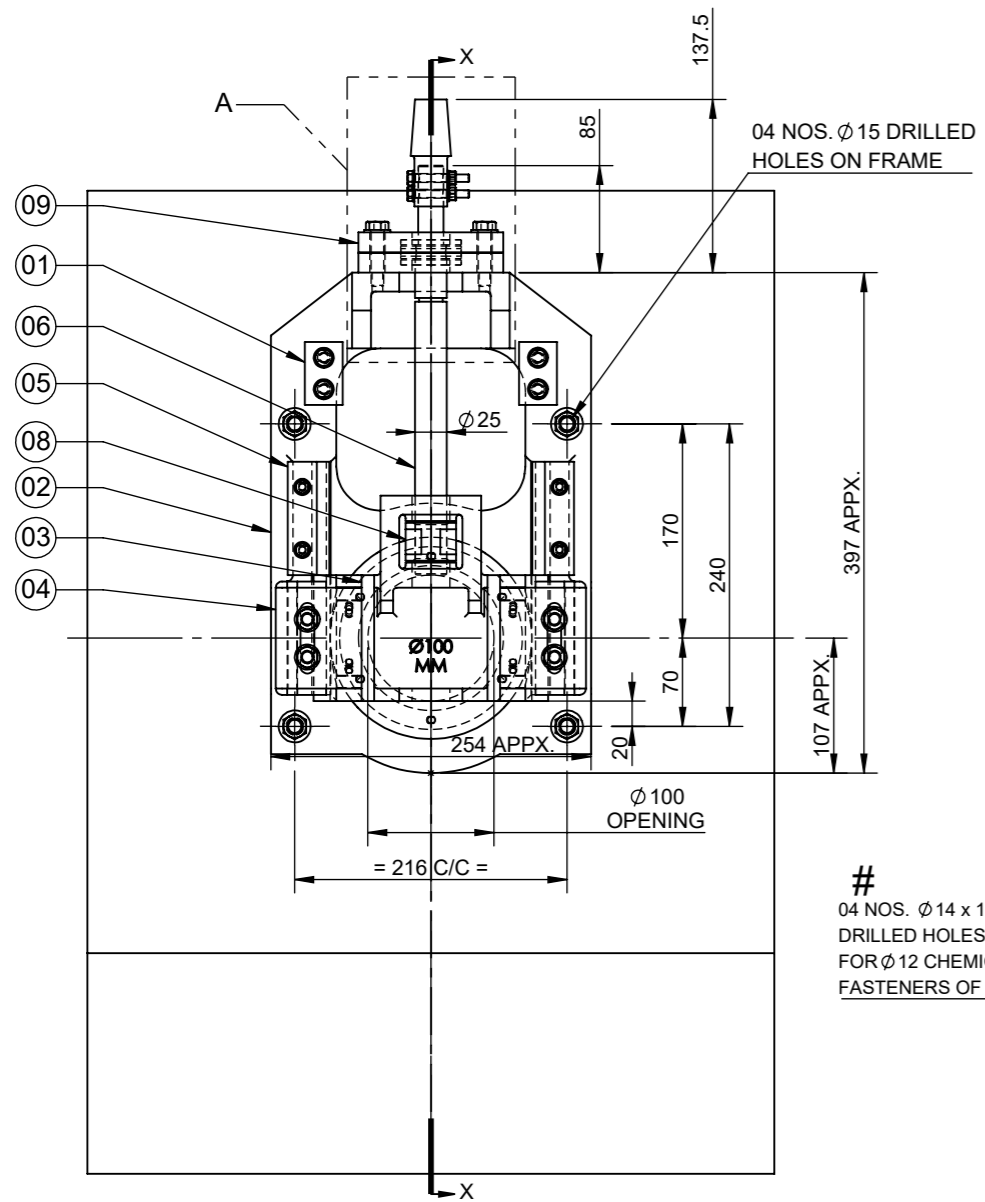
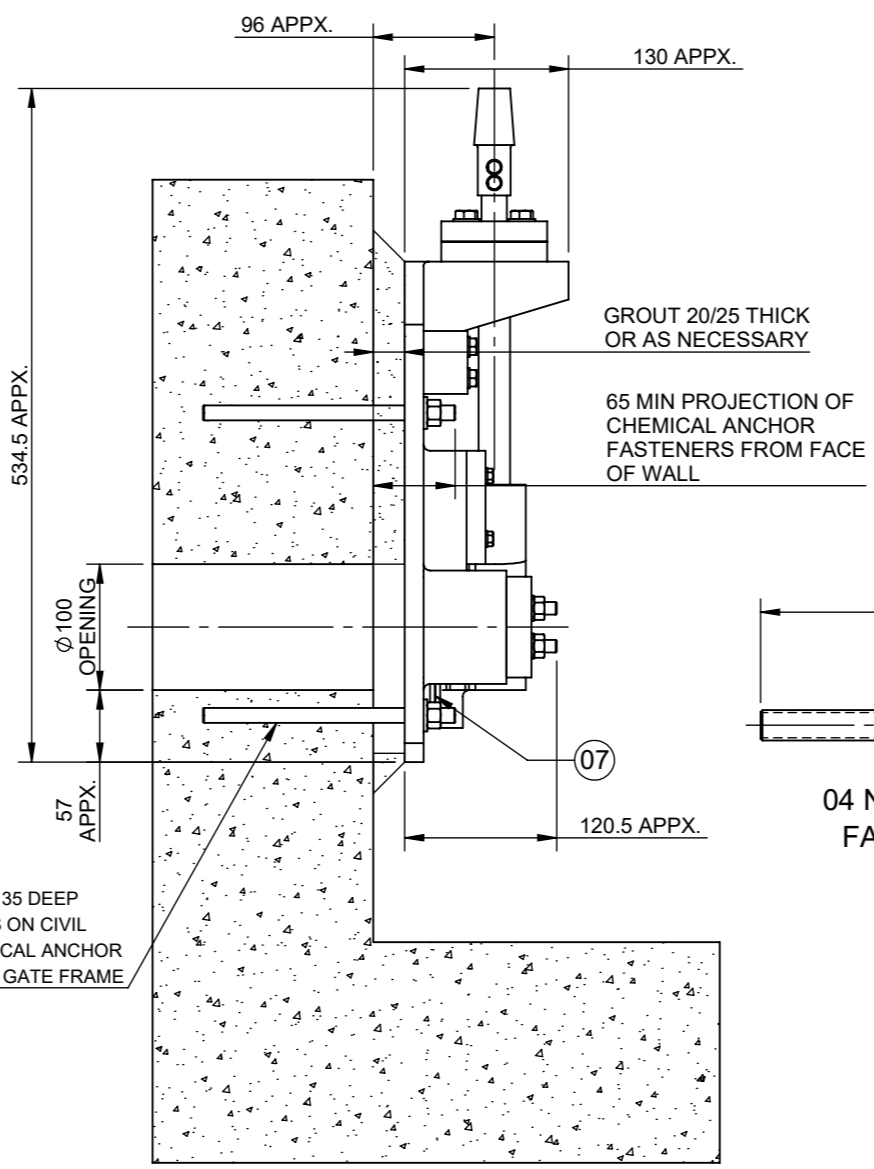


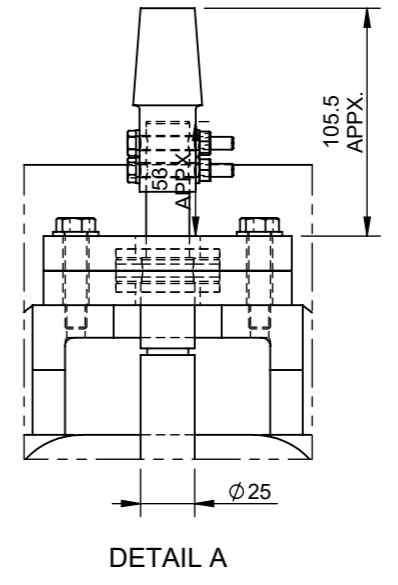
ALL DIMENSIONS IN MM UNLESS OTHERWISE STATED DO NOT SCALE - IF IN DOUBT ASK



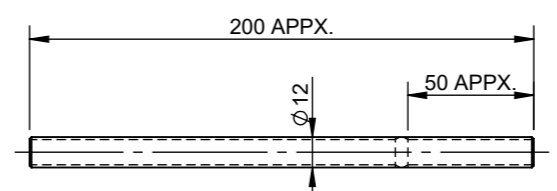
FRONT VIEW OF CAST IRON SLUICE GATE



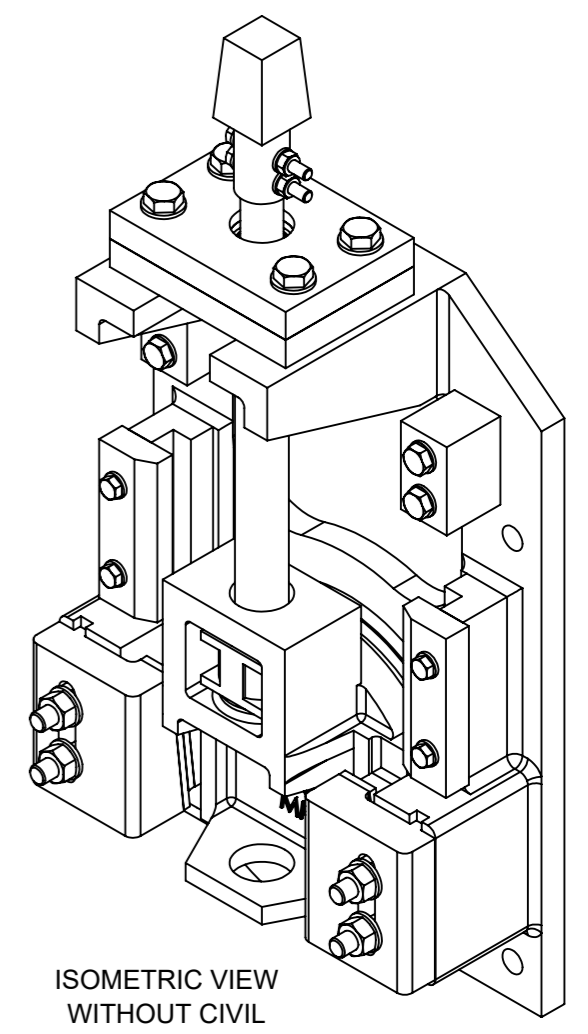
SIDE VIEW WITH CUT SECTION OF WALL



DETAIL A



04 Nos. CHEMICAL ANCHOR FASTENERS FOR FRAME



ISOMETRIC VIEW WITHOUT CIVIL

04 NOS. Ø14 x 135 DEEP DRILLED HOLES ON CIVIL FOR Ø12 CHEMICAL ANCHOR FASTENERS OF GATE FRAME

NOTES :-

- ALLOWABLE DEVIATION FOR UNTOLERANCED DIMENSIONS OF CASTINGS TO BE AS PER ISO 8062-3.
- ALLOWABLE DEVIATION FOR DIMENSIONS WITHOUT SPECIFIED TOLERANCES TO BE AS PER ISO:2768.
- ALL FASTENERS (NUTS,BOLTS & WASHERS) FOR GATE ASSEMBLY & BASE PLATE TO BE OF STAINLESS STEEL BS EN 10088-3 GR.1.4401 (TYPE 316) MATERIAL.
- PAIN IS SUITABLE FOR DIRTY/SEWAGE WATER APPLICATION. BLACK EPOXY PAINT WITH BLACK SHADE (RAL 9005). TOTAL DRY FILM THICKNESS INCLUSIVE OF PRIMING TO BE 250 MICRONS.
- SEAT FACING TO BE FITTED ON PLAIN SURFACE OF SHUTTER AND FRAME.
- ADHESIVE CAPSULES/CHEMICAL CAPSULES AND CHEMICAL ANCHOR FASTENERS TO BE ARRANGED BY CLIENT.
- APPROX OUTER DIMENSIONS OF GATE ASSEMBLY IS 254(W) x 397 (H) x 130 (T) mm.
- APPROX WEIGHT SINGLE LARGEST COMPONENT IS 25 Kg. FOR SAFE HANDLING.
- CHEMICAL ANCHOR FASTENERS HOLE LOCATION ON CIVIL WALL TO BE MARKED BY TAKING REFERENCE FROM GATE FRAME.

09	BASE PLATE	MILD STEEL
08	STEM BLOCK/THRUST NUT	PHOSPHORUS BRONZE BS EN 1982 GRADE CuSn11Pb2-C (CC482K) (R1)
07	SEAT FACING	
06	STEM	STAINLESS STEEL BS EN 10088-3 GR.1.4401 (TYPE 316)
05	COVER RIB	
04	SIDE WEDGING DEVICE (PHOSPHORUS BRONZE BS EN 12167 CUSN6-LINED)	CAST IRON BS EN 1561 GJL-250
03	SHUTTER	
02	GATE FRAME	
01	OVER TRAVEL STOPPER	HDPE
SR. NO	DESCRIPTION	MATERIAL

WATERFRONT FLUID CONTROLS
 MARITIME HOUSE (SUITE 8),
 143 WOODVILLE ST, GLASGOW, G51 2RQ
 WEB: www.waterfrontfc.co.uk
 TEL: (44) 0141-445-3781
 FAX: (44) 0141-445-5101



REV	DATE	DESCRIPTION	REV. BY	APPROVAL
(R2)	05.12.23	Ø100 MM WAS 100 x 100 MM.	VST	DK
(R1)	21.9.23	SEAT FACING & THRUST NUT MOC CHANGED.	SV	AP

DRAWN BY: V.S.T.	PROJECT: STOCK ORDER	GENERAL TOLERANCES: MACHINING: ±0.2mm DIMS: <1000mm ±1.5mm DIMS: >1000mm ±2.0mm	FIRST ANGLE PROJECTION	DO NOT SCALE FROM THIS DRAWING
CHECKED BY: D.D.	CLIENT NAME: WATERFRONT FLUID CONTROLS LTD.	THIS DOCUMENT IS COPYRIGHT AND IS THE PROPERTY OF WATERFRONT FLUID CONTROLS. IT MUST NOT BE COPIED OR DISCLOSED TO A THIRD PARTY, INCLUDING MANUFACTURE OF THE PRODUCT SHOWN THEREIN, WITHOUT THE WRITTEN CONSENT OF THE COMPANY.		
APPROVED BY: D.K.	LOCATION: -----	2009 WATERFRONT FLUID CONTROLS		
S.N.O.	DATE	DESCRIPTION	REV. BY	APPROVAL

TITLE:- GENERAL ARRANGEMENT AND DETAILS FOR INSTALLATION SIZE:- Ø 100 mm WITH NON RISING SPINDLE SUITABLE FOR 6 M SEATING & 6 M UNSEATING WATER HEAD PROVIDED WITH CONVENTIONAL BOTTOM CLOSURE ARRANGEMENT AND HAVING MANUAL OPERATING ARRANGEMENT (GENERALLY MADE AS PER BS:7775)	DATE - 21.04.2023
MATERIAL: SEE MATERIAL NOTES	DRAWING NUMBER: GA-A-QTN-1210004832001
	REV NUMBER: R2
	SHEET NUMBER 1 OF 1

Grid lines 1-10 and A-A2 are present across the drawing area.