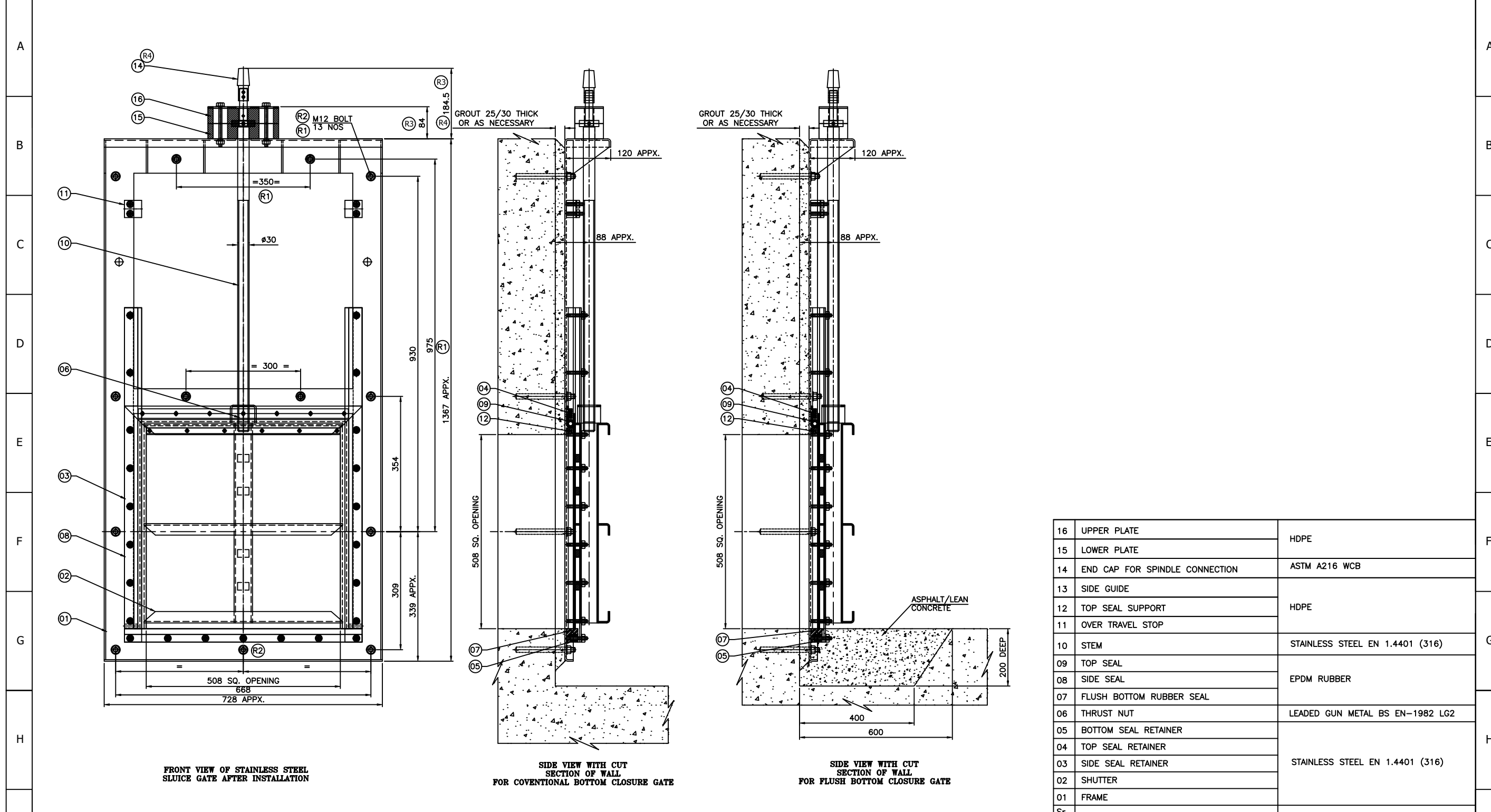


1 2 3 4 5 6 7 8 9 10



Sr.	DESCRIPTION	MATERIAL
16	UPPER PLATE	HDPE
15	LOWER PLATE	
14	END CAP FOR SPINDLE CONNECTION	ASTM A216 WCB
13	SIDE GUIDE	HDPE
12	TOP SEAL SUPPORT	
11	OVER TRAVEL STOP	STAINLESS STEEL EN 1.4401 (316)
10	STEM	
09	TOP SEAL	EPDM RUBBER
08	SIDE SEAL	
07	FLUSH BOTTOM RUBBER SEAL	LEADED GUN METAL BS EN-1982 LG2
06	THRUST NUT	
05	BOTTOM SEAL RETAINER	STAINLESS STEEL EN 1.4401 (316)
04	TOP SEAL RETAINER	
03	SIDE SEAL RETAINER	STAINLESS STEEL EN 1.4401 (316)
02	SHUTTER	
01	FRAME	STAINLESS STEEL EN 1.4401 (316)

NOTES :-
 (1) ALLOWABLE DEVIATION FOR DIMENSIONS WITHOUT SPECIFIED TOLERANCES TO BE AS PER IS : 2768.
 (2) ALL FASTENERS (NUTS, BOLTS & WASHERS) FOR GATE ASSEMBLY TO BE OF STAINLESS STEEL EN 1.4401 (316) MATERIAL.
 (3) ALL STAINLESS STEEL FABRICATED PARTS TO BE BLAST CLEANED TO REMOVE SURFACE CONTAMINATION AND THEREAFTER PICKLED AND PASSIVATED .
 (4) ADHESIVE CAPSULE/CHEMICAL CAPSULE & CHEMICAL ANCHOR FASTENERS TO BE ARRANGED BY CLIENT
 (5) APPROX. OUTER DIMENSIONS OF GATE ASSLY IS 728 x 1367 x 120mm
 (6) REFER DRG. NO. JE/SG/GEN/1490-R1 FOR SECTIONAL DETAILS.

WATERFRONT FLUID CONTROLS
 MARITIME HOUSE (SUITE 8),
 143 WOODVILLE ST, GLASGOW, G51 2RQ
 WEB: www.waterfrontfc.co.uk
 TEL: (44) 0141-445-3781
 FAX: (44) 0141-445-5101

REV	DATE	DESCRIPTION	REV.BY	CHD.BY
R4	28.01.20	END CAP UPDATED	GDC	SA
R3	25.10.19	DIM. 204 & 84 ADDED.		SA
R2	21.03.19	ANCHOR FASTENERS QUANTITY REVISED.		NKV
R1	19.03.19	02 NOS TOP SIDE HOLES ADDED		NKV

PROJECT: -----
 CLIENT NAME: -----
 LOCATION: -----
 DRAWN BY: R.Y.
 CHECKED BY: S.A.
 APPROVED BY: N.K.V.
 GENERAL TOLERANCES:
 MACHINING: ±0.2mm
 DIMS: <1000mm ±1.5mm
 DIMS: >1000mm ±2.0mm
 FIRST ANGLE PROJECTION
 DO NOT SCALE FROM THIS DRAWING
 THIS DOCUMENT IS COPYRIGHT AND IS THE PROPERTY OF WATERFRONT FLUID CONTROLS. IT MUST NOT BE COPIED OR DISCLOSED TO A THIRD PARTY, INCLUDING MANUFACTURE OF THE PRODUCT SHOWN THEREIN, WITHOUT THE WRITTEN CONSENT OF THE COMPANY.
 © 2009 WATERFRONT FLUID CONTROLS

1 2 3 4 5 6 7 8 9 10

A B C D E F G H I J

TITLE:
 DETAILS OF STAINLESS STEEL FACE WALL MOUNTING, UPWARD OPENING, SELF CONTAINED, NON-RISING SPINDLE, RESILIENT SEATED, SLUICE GATE SUITABLE FOR 6M SEATING AND UNSEATING WATER HEAD. GATE SIZE 508 SQ.
 MATERIAL: SEE MATERIAL NOTES
 DRAWING NUMBER:
 JE/SG/GAC/FBF/10371-A
 REV NUMBER: R4
 SHEET NUMBER 1 OF 1