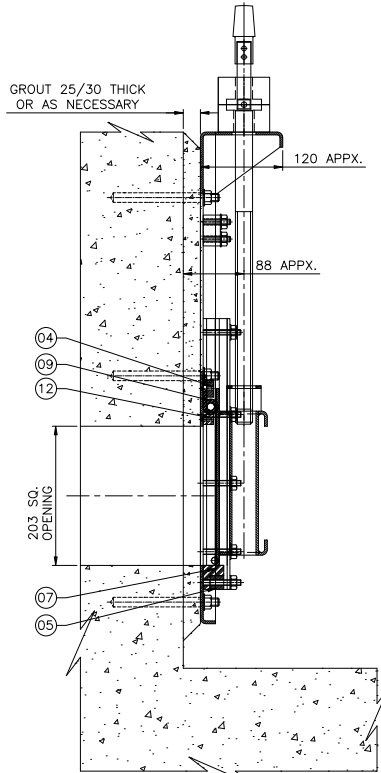
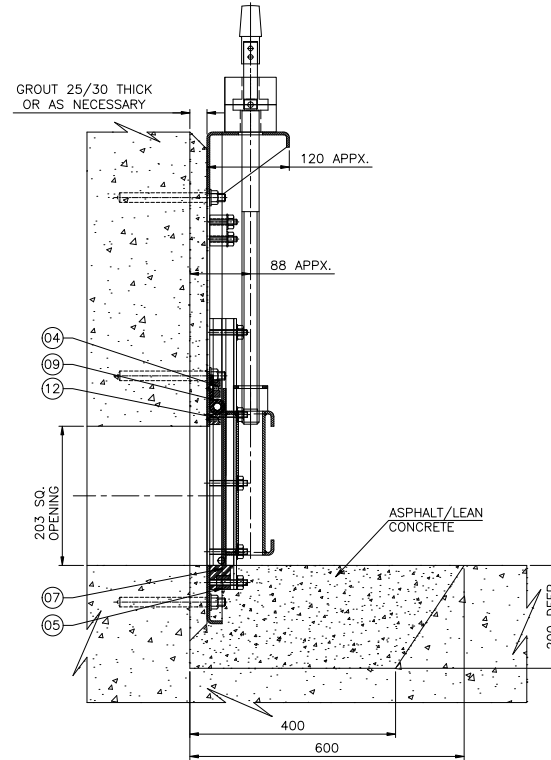


FRONT VIEW OF STAINLESS STEEL SLUICE GATE AFTER INSTALLATION



SIDE VIEW WITH CUT SECTION OF WALL FOR CONVENTIONAL BOTTOM CLOSURE GATE



SIDE VIEW WITH CUT SECTION OF WALL FOR FLUSH BOTTOM CLOSURE GATE

16	UPPER PLATE	HDPE
15	LOWER PLATE	HDPE
14	END CAP FOR SPINDLE CONNECTION	ASTM A216 WCB
13	SIDE GUIDE	
12	TOP SEAL SUPPORT	HDPE
11	OVER TRAVEL STOP	
10	STEM	SS ASTM A276 TYPE 304
09	TOP SEAL	
08	SIDE SEAL	EPDM RUBBER
07	FLUSH BOTTOM RUBBER SEAL	
06	THRUST NUT	LEADED GUN METAL BS EN-1982 L62
05	BOTTOM SEAL RETAINER	
04	TOP SEAL RETAINER	
03	SIDE SEAL RETAINER	SS ASTM A240 TYPE 304
02	SHUTTER	
01	FRAME	
Sr.	DESCRIPTION	MATERIAL

- NOTES :-
 (1) ALLOWABLE DEVIATION FOR DIMENSIONS WITHOUT SPECIFIED TOLERANCES TO BE AS PER IS : 2768.
 (2) ALL FASTENERS (NUTS, BOLTS & WASHERS) FOR GATE ASSEMBLY TO BE OF STAINLESS STEEL ASTM A276 TYPE 304.
 (3) ALL STAINLESS STEEL FABRICATED PARTS TO BE BLAST CLEANED TO REMOVE SURFACE CONTAMINATION AND THEREAFTER PICKLED AND PASSIVATED.

- (4) ADHESIVE CAPSULE/CHEMICAL CAPSULE & CHEMICAL ANCHOR FASTENERS TO BE ARRANGED BY CLIENT
 (5) APPROX. OUTER DIMENSIONS OF GATE ASSLY IS 423 x 717 x 120mm
 (6) REFER DRG. NO. JE/SQ/GEN/1490-R1 FOR SECTIONAL DETAILS.

REV	DATE	DESCRIPTION	REV.BY	CHD.BY	DRAWN BY: Basant	PROJECT:	GENERAL TOLERANCES: MACHINING: ±0.2mm DIMS: <1000mm ±1.5mm DIMS: >1000mm ±2.0mm	FIRST ANGLE PROJECTION	DO NOT SCALE FROM THIS DRAWING
04	28.01.20	END CAP UPDATED	GDC	SA	CHECKED BY: D.K.	CLIENT NAME:	THIS DOCUMENT IS COPYRIGHT AND IS THE PROPERTY OF WATERFRONT FLUID CONTROLS. IT MUST NOT BE COPIED OR DISCLOSED TO A THIRD PARTY, INCLUDING MANUFACTURE OF THE PRODUCT SHOWN THEREIN, WITHOUT THE WRITTEN CONSENT OF THE COMPANY. © 2009 WATERFRONT FLUID CONTROLS		
03	24.10.19	DIM. 204 & 84 ADDED.		SA	APPROVED BY: D.K.	LOCATION:			
02	28.11.17	THRUST MATERIAL CHANGED		SA					
01	24.6.17	SECTIONAL VIEW ADDED		SA					

WATERFRONT FLUID CONTROLS
 MARITIME HOUSE (SUITE 8),
 143 WOODVILLE ST, GLASGOW, G51 2RQ

WEB: www.waterfrontfc.co.uk
 TEL: (44) 0141-445-3781
 FAX: (44) 0141-445-5101

TITLE:
 DETAILS OF STAINLESS STEEL FACE WALL MOUNTING, UPWARD OPENING, SELF CONTAINED, NON-RISING SPINDLE, RESILIENT SEATED, SLUICE GATE SUITABLE FOR 6M SEATING AND UNSEATING WATER HEAD. GATE SIZE 203 SQ.

DRAWING NUMBER:
 JE/SQ/GAC/FBF/10367

REV NUMBER: R4

MATERIAL: SEE MATERIAL NOTES

SHEET NUMBER 1 OF 1