

STAINLESS STEEL and HDPE PENSTOCKS

Waterfront designs and manufactures a range of products for applications in the potable and wastewater sectors as well as for drainage, power and industrial plants.

With the application of its **advanced computer design and quotation programmes**, a rapid response is achieved in providing quality customer service and on-time deliveries. This range of products have been computer modelled using finite element analysis to achieve maximum strength with minimum cost, adhering strictly to recognised industry standards and engineering principles.



MATERIALS

All penstocks are made from high quality HDPE materials or a combination of stainless steel and HDPE materials. The materials are corrosion resistant with a longevity and low maintenance cost.

The stainless steel 304 or 316 thrust bearing achieves a reduction of the operating moment by a factor of 4.

The back plate is made completely from 30 mm thick HDPE sheet. This results in a robust construction that ensures free running of the spindle during and after installation.

Stainless steel spindle tube instead of a free-standing plastic spindle protection tube contributes to the rigidity of the construction.

STAINLESS STEEL Z – PROFILE

Stainless steel Z – profile instead of a U – profile to allow better assembly.

Extra stainless steel middle strip for improved rigidity and fixing.

Self-lubricating polyacetal thread block that absorbs no moisture and retains its shape.



Waterfront is accredited by UVDB,
UVDB VERIFY and ISO 9001:2000

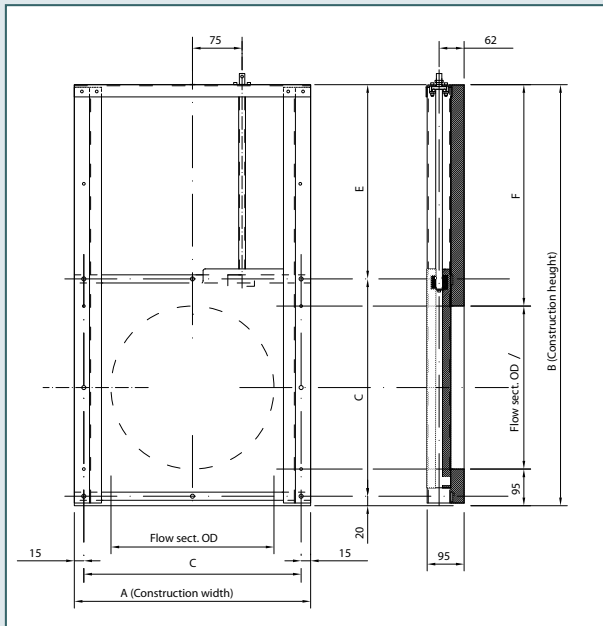
WATERFRONT FLUID CONTROLS LTD

www.waterfrontfc.co.uk

The Hub (Unit 8), Digital Media Quarter, Pacific Drive, Glasgow, G51 1EA

TEL: +44 (0)141 427 7266 * FAX: +44 (0)141 427 2706 * E MAIL: SALES@WATERFRONTFC.CO.UK

Company Reg No: 305356 * VAT Reg No: 894898138



MOUNTING SET

DN150 8x anchor M12

DN150 8x anchor M12

DN150 8x anchor M12

DN150 8x anchor M12

INDUSTRIAL STANDARD

BS7775

LOADING CHARACTERISTICS

6 m on- and off-seating
4-sides closing, double acting

STANDARD CONSTRUCTION MATERIALS

Frame: Stainless Steel AISI 304
Slide gate: HMPE -500
Backing plate: HDPE-300 (30 mm)
Reinforcements: Stainless Steel AISI 304
Non-rising spindle: Stainless Steel AISI 304 TR25 x 7.5
Spindle bearing: PTFE
Door Nut: POM (self-lubricating)
Bolts and nuts: Stainless Steel A4
Sealing: EPDM

OPTIONAL CONSTRUCTION MATERIALS

Frame: Stainless Steel AISI 316
Slide gate: Stainless Steel AISI 316
Reinforcements: Stainless Steel AISI 316
Door Nut: Bronze
Sealing: NBR

OPTIONAL FEATURES

Non-standard sizes
Electric, hydraulic or pneumatic operations
Rising spindle
Wedge construction

Ø D	A	B	C	E	F	Weight
150	340	600	300	280	355	16kg
200	390	700	350	330	405	22kg
250	440	800	400	380	455	26kg
300	490	900	450	430	505	31kg

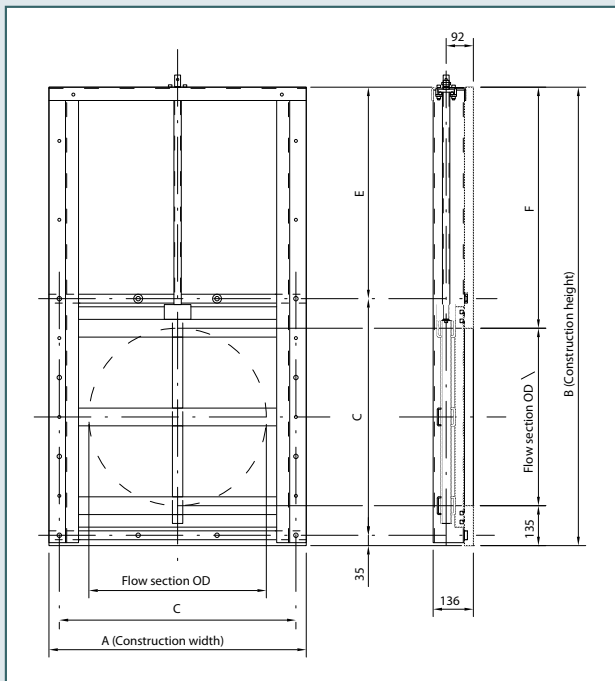
WATERFRONT FLUID CONTROLS LTD

www.waterfrontfc.co.uk

The Hub (Unit 8), Digital Media Quarter, Pacific Drive, Glasgow, G51 1EA

TEL: +44 (0)141 427 7266 * FAX: +44 (0)141 427 2706 * E MAIL: SALES@WATERFRONTFC.CO.UK

Company Reg No: 305356 * VAT Reg No: 894898138



MOUNTING SET

- DN400 12x anchor M12**
- DN500 12x anchor M12**
- DN600 12x anchor M12**
- DN700 12x anchor M12**
- DN800 18x anchor M18**
- DN900 18x anchor M18**

INDUSTRIAL STANDARD

BS7775

LOADING CHARACTERISTICS

- 6 m on- and off-seating
- 4-sides closing, double acting

STANDARD CONSTRUCTION MATERIALS

- Frame: Stainless Steel AISI 304
- Slide gate: HMPE -500
- Backing plate: HDPE-300 (30 mm)
- Reinforcements: Stainless Steel AISI 304
- Non-rising spindle: Stainless Steel AISI 304 TR25 x 7.5
- Spindle bearing: Stainless Steel thrust bearing
- Door Nut: POM (self-lubricating)
- Bolts and nuts: RVS A4
- Sealing: EPDM

OPTIONAL CONSTRUCTION MATERIALS

- Frame: Stainless Steel AISI 316
- Slide gate: Stainless Steel AISI 304/316
- Reinforcements: Stainless Steel AISI 316
- Door Nut: Bronze
- Sealing: NBR

OPTIONAL FEATURES

- Non-standard sizes
- Electric, hydraulic or pneumatic operation
- Rising spindle
- Wedge construction

Ø D	A	B	C	E	F	Weight
400	670	1150	600	515	615	55kg
500	770	1350	700	615	715	75kg
600	870	1550	800	715	815	90kg
700	970	1750	900	815	915	110kg
800	1070	1950	1000	915	1015	130kg
900	1170	2150	1100	1015	1115	155kg

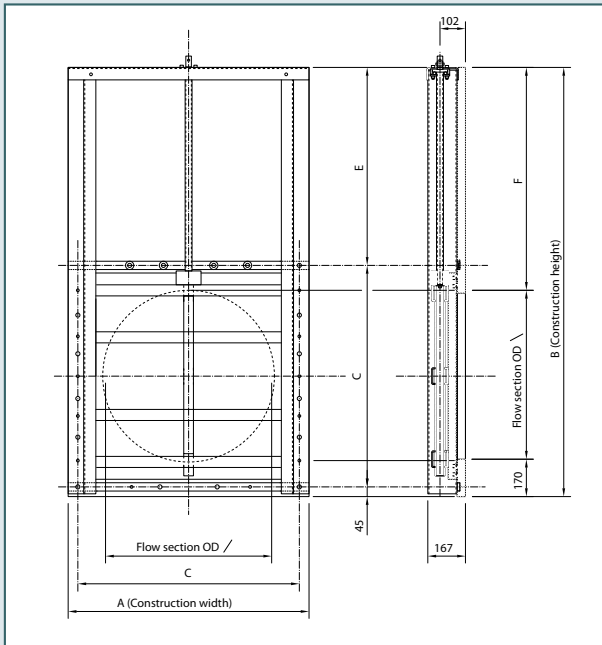
WATERFRONT FLUID CONTROLS LTD

www.waterfrontfc.co.uk

The Hub (Unit 8), Digital Media Quarter, Pacific Drive, Glasgow, G51 1EA

TEL: +44 (0)141 427 7266 * FAX: +44 (0)141 427 2706 * E MAIL: SALES@WATERFRONTFC.CO.UK

Company Reg No: 305356 * VAT Reg No: 894898138



MOUNTING SET

DN1000 22x anchor M16

DN1250 22x anchor M16

DN1500 30x anchor M16



Ø D	A	B	C	
1800	2200	4200	2120	Stainless Steel slide gate
2000	2400	4600	2320	
2500	2900	5600	2820	Two synchronized spindles
3000	3400	6600	3320	

INDUSTRIAL STANDARD

BS7775

LOADING CHARACTERISTICS

6 m on- and off-seating
4-sides closing, double acting

STANDARD CONSTRUCTION MATERIALS

Frame: RVS AISI 304

Slide gate: HMPE - 300

Reinforcements: RVS AISI 304

Non-rising spindle: RVS AISI 316
TR40x7.5L

Spindle bearing: RVS AISI 304 thrust bearing

Door Nut: POM / Bronze

Bolts and nuts: RVS A4

Sealing: EPDM

OPTIONAL CONSTRUCTION MATERIALS

Frame: Stainless Steel AISI 316

Slide gate: Stainless Steel AISI 304/316

Reinforcements: Stainless Steel AISI 316

Sealing: NBR

OPTIONAL FEATURES

Non-standard sizes

Electric, hydraulic or pneumatic operations

Rising spindle

Wedge construction

Ø D	A	B	C	E	F	Weight
1000	1340	2400	1250	1105	1230	175kg
1250	1590	2900	1500	1355	1480	225kg
1500	1840	3400	1750	1605	1730	255kg

WATERFRONT FLUID CONTROLS LTD

www.waterfrontfc.co.uk

The Hub (Unit 8), Digital Media Quarter, Pacific Drive, Glasgow, G51 1EA

TEL: +44 (0)141 427 7266 * FAX: +44 (0)141 427 2706 * E MAIL: SALES@WATERFRONTFC.CO.UK

Company Reg No: 305356 * VAT Reg No: 894898138