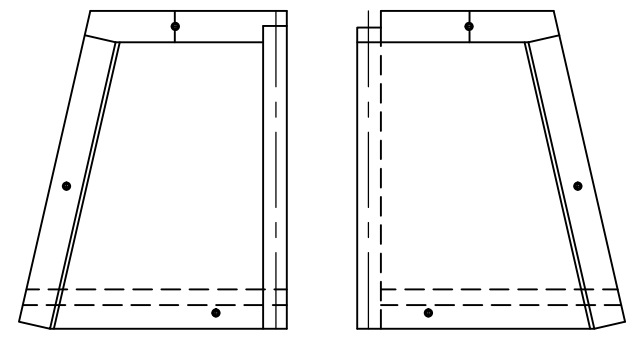
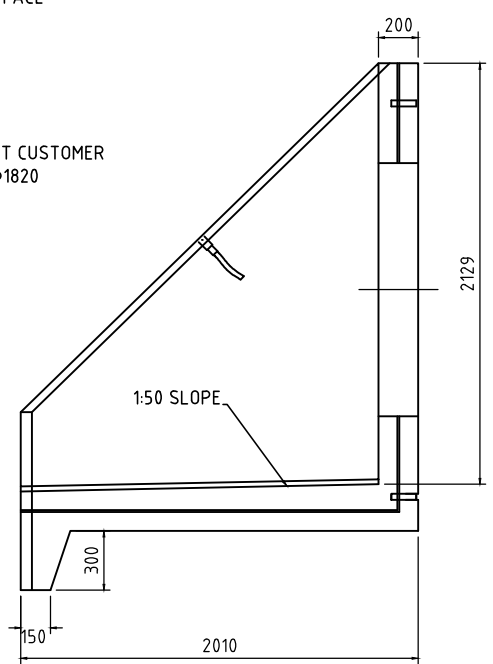
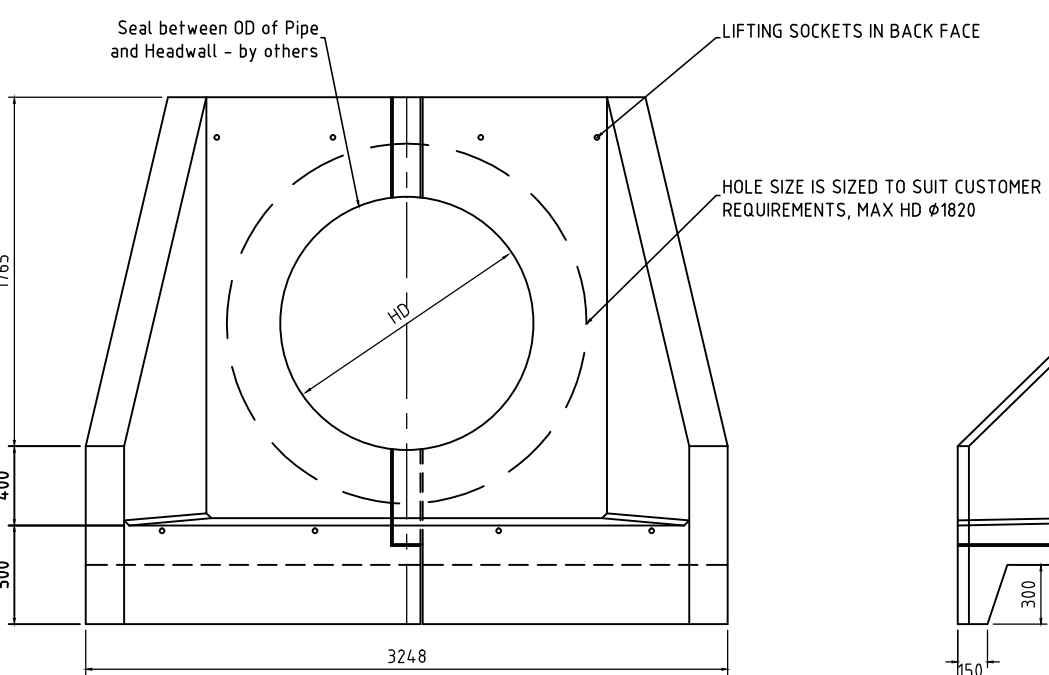
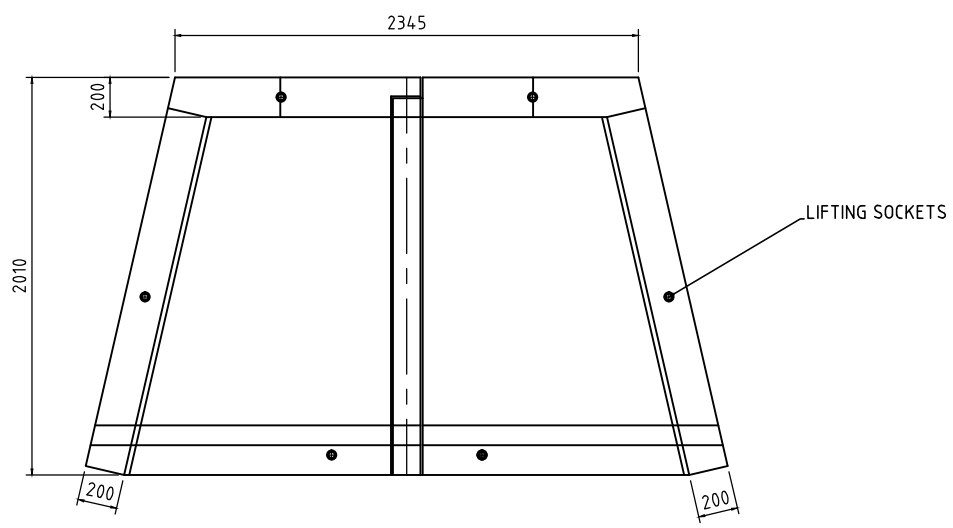
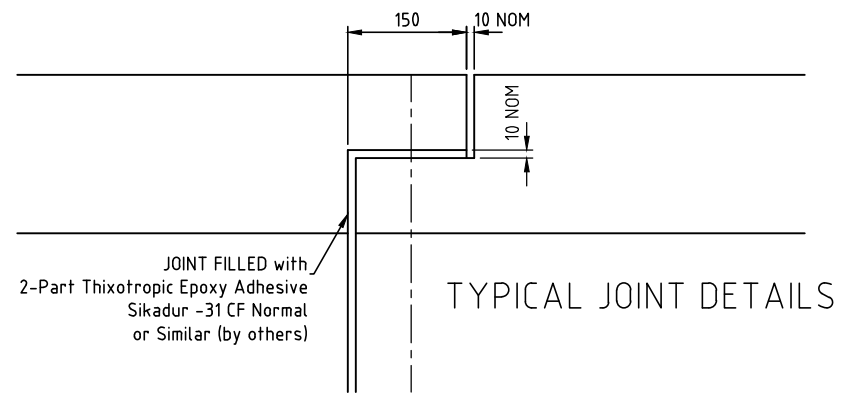


DO NOT SCALE

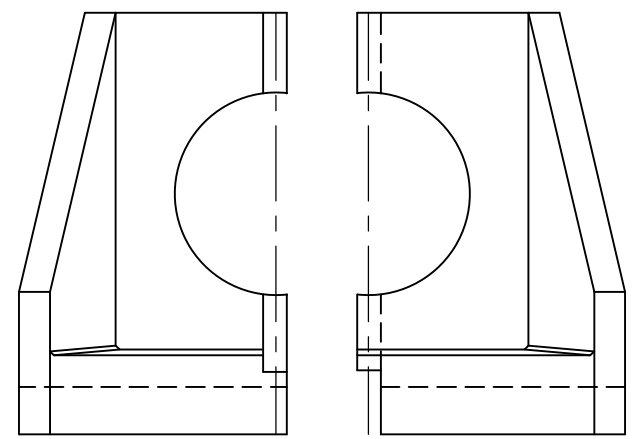
COPY RIGHT AND DESIGN RIGHT

COPYRIGHT:  
The drawing is protected by copyright. Must not be reproduced in any form, including manufacture of the product shown therein, without the prior written consent of the copyright owners.  
WATERFRONT FLUID CONTROLS LTD.



PART A

PART B



- NOTES:
1. Cylindrical opening in rear wall cast to suit outside diameter of chosen pipe.
  2. Headwall to be used with pipe outer diameters not exceeding 1800mm (typically suitable for 1050 to 1500mm concrete pipe).
  3. Approximate Weight = 3725 Kg per Half
  4. Concrete C40/50 DC4 (BRE SD1) (Delta ALT Mix)
  5. Cover 40mm Minimum
  6. Tolerances Dimensional Tolerance as per BS8110
  7. The suitability of the product for the project (Stability & Support Conditions for Example) must be checked by the Project Engineer. as a minimum units should be bedded on 100mm thickness of lean mix-concrete (GEN1)
  8. Suitably rated three-legged lifting chain set must be used. The included angle at the master link must be less than 30°. The minimum leg length must be Lifting speed of ≈90m/s has been assumed.



TITLE

Extra-Large Concrete Headwall for Pipe Outer Diameters up to 1800mm

WATERFRONT FLUID CONTROLS  
The Hub (Unit 8),  
Pacific Drive, Glasgow  
G51 1EA  
website: [www.waterfrontfluidcontrols.co.uk](http://www.waterfrontfluidcontrols.co.uk)  
Tel: (44) 0141-427266  
Fax: (44) 0141-427206

SCALE	1:10, 1:40 & 1:50
DRAWN	J. Jenkins
DATE	04/02/2014

DRG. No. CDO/ D / 1516

REV No. 1