

CAST IRON FLAT BACK FRAME SLIDE GATE

SERIES: A-101

SELF CONTAINED SLIDE GATE



NON SELF CONTAINED SLIDE GATE



SPECIFICATION

These slide gates are made in general compliance with IS 13349 / BS 7775 / AWWA C560.

APPLICATION

These slide gates are directly mounted on the face of the wall and are used to isolate flow in and out of a conduit. They are suitable for 6 m seating and unseating head up to 600 x 600 mm size and 6 m seating and 3 m unseating head for higher sizes up to 1200 x 1200 mm.

FEATURES:

- Flat back frame suitable for directly mounting on face of wall using anchor fasteners and secondary grout between wall and frame or on wall thimble.
- Frame provided with square aperture for square as well as round opening in wall.
- The guides are integral to the frame with adjustable wedges bolted to the machined pads on the guides.
- Short length / open top frame provided with short length extension guides sufficient to engage at least half the overall vertical height of slide / door when the gate is full open.
- Slide sufficiently ribbed to suit the applicable water head and designed to suit rising as well as non rising stem requirement.
- Slide provided with integral pocket to house threaded stem connecting block connecting the slide with the stem.
- Non corroding metal to metal seating faces / strips on all the four sides for conventional bottom closing and on three sides for flush bottom closing slide gates.
- Flush bottom closing slide gates provided with frame mounted flush bottom seal flush with bottom invert of opening.
- Seating faces secured by counter sunk head machine screws on plain machined faces of frame & slide.
- Frame mounted adjustable side wedges in contact with slide mounted fixed wedges to ensure that metal seating faces mounted on frame and slide comes in close mating contact only at the verge of final closure to achieve the desired leakage performance.
- Rising stem with pedestal / yoke mounted manual gate operating mechanism to operate the slide gate with less than 18 kgs effort on the crank or handwheel.
- Single piece or multi piece stem to suit the installation depth, coupling to connect stem sections with the lowest stem section connecting to the stem block mounted on slide.

- Stem guides and brackets to prevent buckling of stem.
- Anchor bolts with nuts and washers for frame, stem guide brackets and pedestal of lift mechanism.
- Offered with epoxy paint or as required by specifications.

OPTIONAL FEATURES:

- Square / Rectangular / Circular (Diameter) shaped wall thimble having section F, E or MJ as required.
- Slide gates suitable for higher water head.
- Oversized frame opening for slide gates to be mounted in front of a concrete pipe terminating at the face of the wall.
- Seating faces secured firmly in finished groove of frame & slide for full compliance to AWWA C560.
- Self-contained gate frame with lift mechanism mounted directly on yoke provided across the top of slide gate frame.
- Non-rising stem.
- Electric / Pneumatic / Hydraulic operating arrangement.
- Portable electric or hydraulic operator.
- Foot wall bracket for pedestal mounting.
- Stem cover made of galvanized steel or transparent plastic tube.
- Gate position indicating arrangement.

MATERIAL OF CONSTRUCTION:

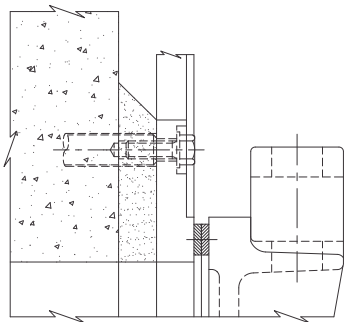
Depending upon application and requirement, client should select and specify the material of construction option for various components of slide gate from the alternatives stated on page no.39.

SHOP TESTING:

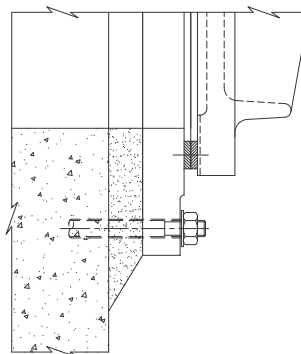
- Leakage testing of slide gate at plant at actual operating head to verify slide gate leakage performance meeting leakage requirement as specified or as given on page no.43.
- Hydrostatic body test at 1.5 times the maximum operating head for structural soundness.
- Seat clearance check of each slide gate for clearance between mating sealing faces.
- Movement test for checking interference free movement of complete assembly.
- Torque test to verify gate operating torque for manually operated slide gates.

For getting similar leakage result at site ensure that there is no frame distortion during the process of slide gate installation on wall.

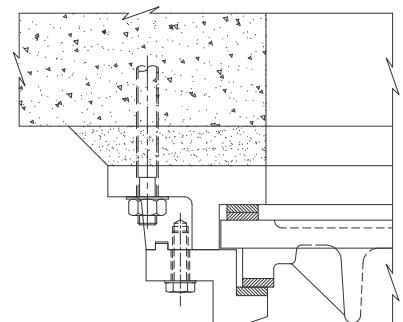
SEALING ARRANGEMENT



TOP SEALING ARRANGEMENT



BOTTOM SEALING ARRANGEMENT



SIDE SEALING ARRANGEMENT