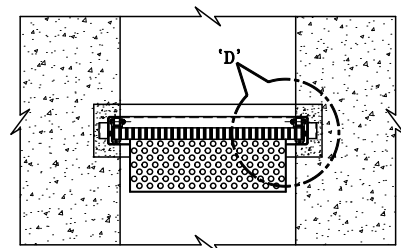
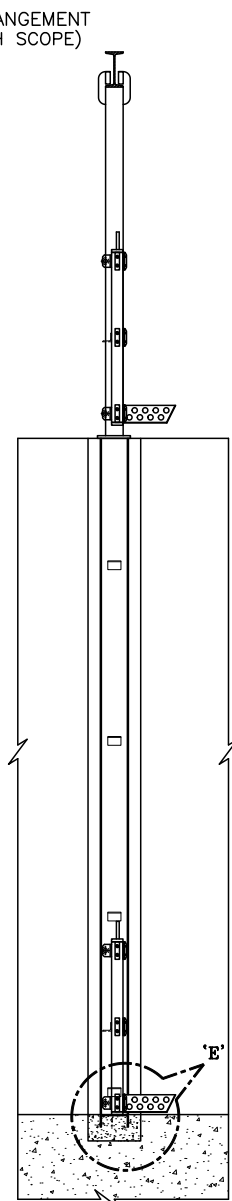


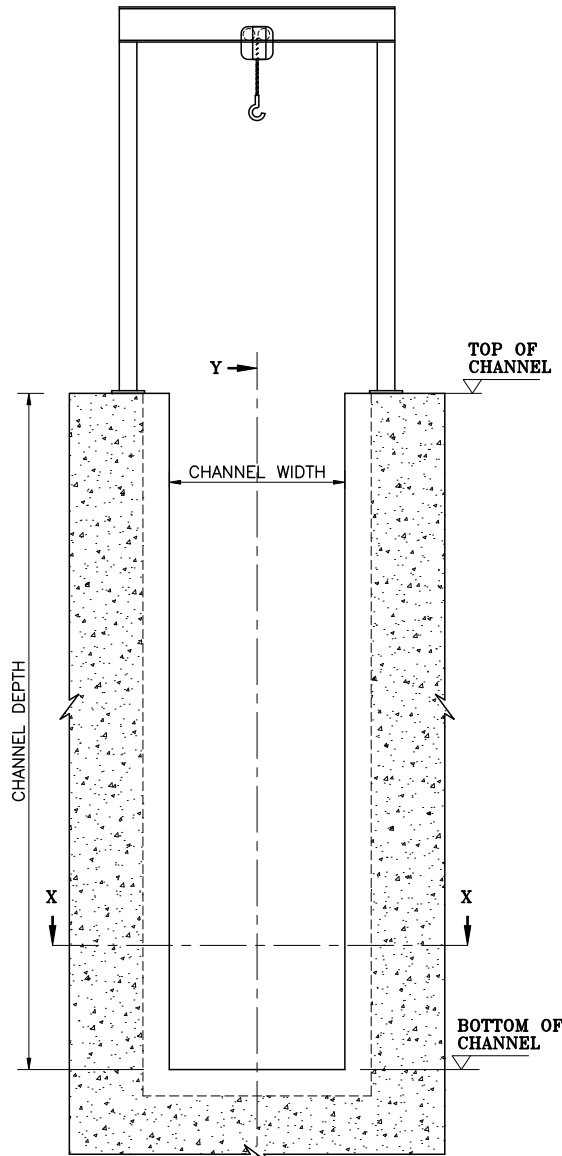
FRONT VIEW



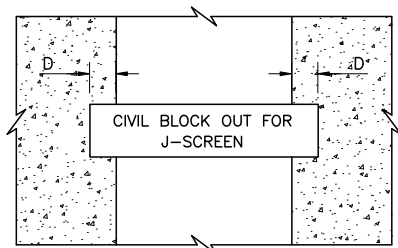
SECTION 'A-A'



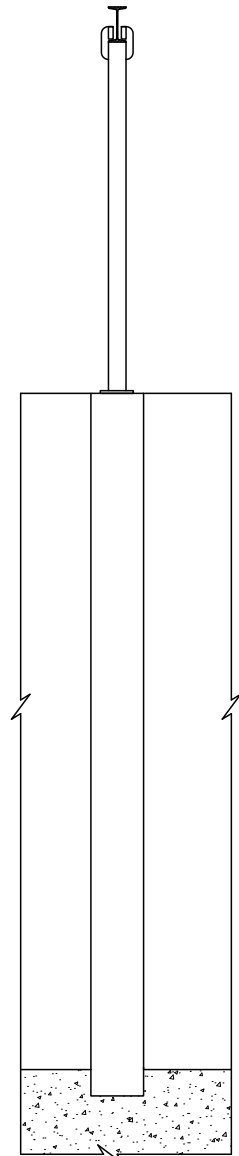
SECTION 'B-B'



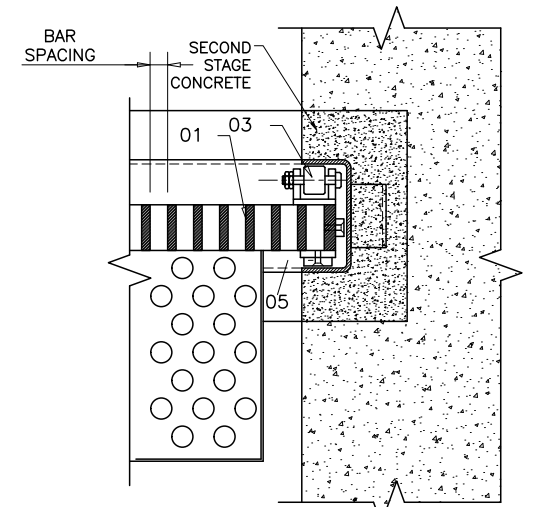
FRONT VIEW



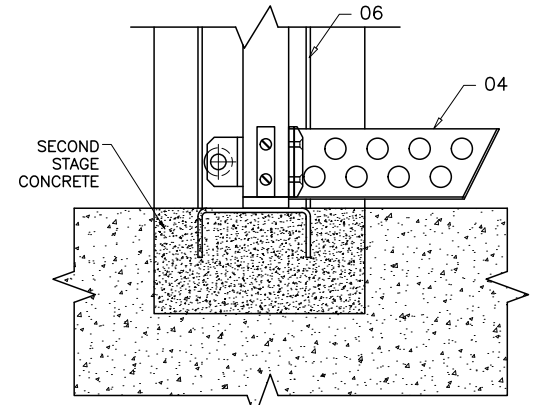
SECTION 'X-X'



SECTION 'Y-Y'



ENLARGE VIEW AT 'D'



ENLARGE VIEW AT 'E'


SR.NO.	DESCRIPTION	MATERIAL
06	GUIDE FRAME	-
05	REPLACEABLE WEAR SHOES	LEADED GUNMETAL BS:1400 LG2
04	J-TRAY	-
03	ROLLER	UHMWPE
02	LIFTING HOOK	-
01	SCREEN (BAR 65x12)	-

CLIENT : M/s -
PROJECT : -
QTY. : 01 No.

- NOTE:-
1. ALL DIMENSIONS ARE IN MILLIMETERS UNLESS OTHERWISE SPECIFIED .
 2. ALLOWABLE DEVIATION FOR DIMENSIONS WITHOUT SPECIFIED TOLERANCES TO BE AS PER IS : 2102.
 3. ALL FASTENERS (NUT, BOLTS AND WASHERS) FOR SCREEN ASSEMBLY TO BE OF -----
 4. HOISTING CAPACITY FOR SCREEN - Kgs..

THIS REFERENCE DRAWING IS NOT SPECIFIC TO THE REQUIREMENT OF THE CLIENT AND IS SUBMITTED TO GIVE A GENERAL IDEA OF PRODUCT TO BE GIVEN. A DETAILED DRAWING SPECIFIC TO THE CLIENT REQUIREMENT WILL BE SUBMITTED LATER ON UPON RECEIPT OF ORDER. HENCE DESIGN, DIMENSION AND MATERIAL OF CONSTRUCTION IS FOR GENERAL REFERENCE ONLY AND SUBJECT TO CHANGE.

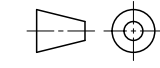
REV.	REVISIONS	DATE	REV.BY	APPD.BY
REVISION TABLE				



JASH ENGINEERING LTD.
INDORE (INDIA)

GENERAL ARRANGEMENT AND CIVIL BLOCK OUT DETAILS FOR INSTALLATION OF 'JASH' MAKE J-TYPE MANUAL SCREEN

PROJECTION



SCALE : NTS. DT.: ----

APPD	---	DWG. SUBMITTED IN PDF FORMAT
CHKD	---	
DRN.	---	
DRG.NO.	---	REV.
JE/SM/M/GAC/REF.		RO